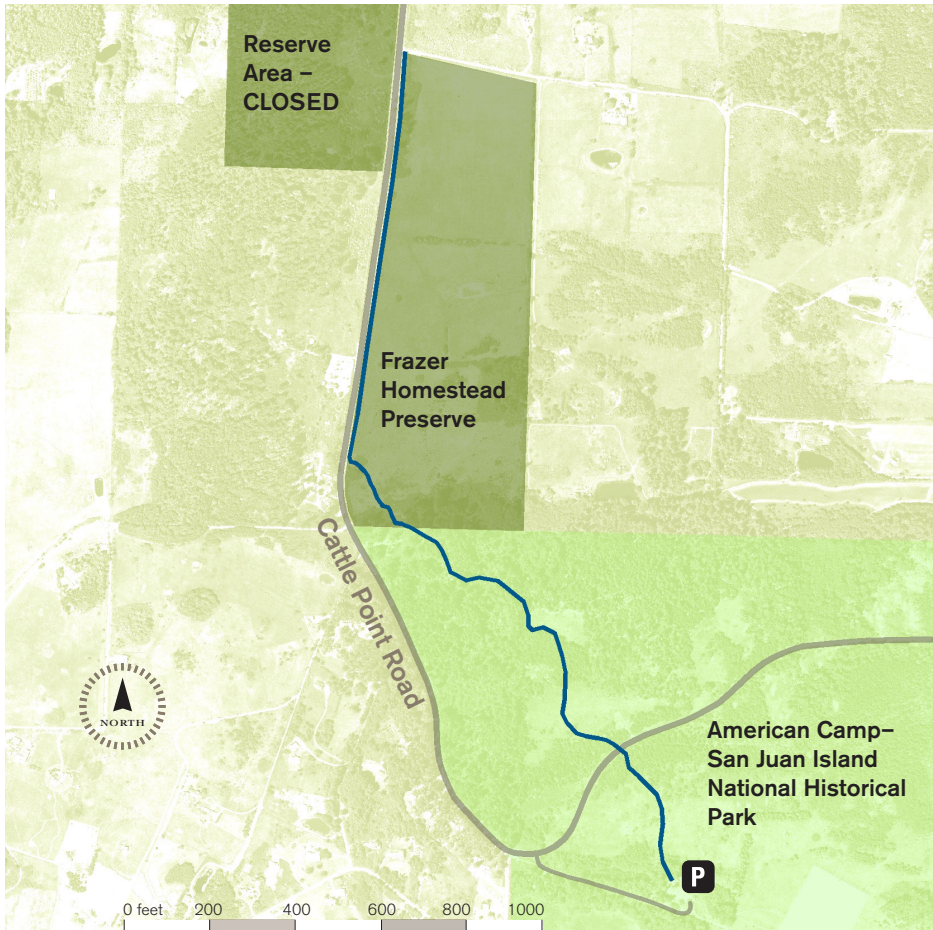


# FRAZER HOMESTEAD PRESERVE





## San Juan Island



### Directions

#### From the Friday Harbor ferry landing:

Turn left onto Spring Street and continue out of town. At 0.5 miles, turn left onto Mullis Street. Road name changes to Cattle Point Road at intersection with Argyle Road. At 5.8 miles, turn right into the American Camp visitor center (12 parking spaces). The trail to Frazer Homestead Preserve leaves from the kiosk at the eastern edge of the parking area, heading north.

-  Land Bank Preserve
-  National Park Service
-  Trails
-  Parking

### When you visit:

- Stay on designated trails.
- Daytime and pedestrian use only.
- Leash your dog.
- Take nothing.
- Leave nothing.

The 68-acre **Frazer Homestead Preserve** was acquired to protect farmland and scenic views along Cattle Point Road, immediately adjacent to the American Camp unit of San Juan Island National Historical Park. The bulk of the preserve is leased for agricultural use to a local farmer. A 1.25 mile (one way) walking trail connects to the Frazer Homestead Preserve from the American Camp visitor center. (Restroom facilities are available at this location.) The trail offers views across the fields to old homesteads, distant islands, and Mount Baker. To protect livestock adjacent to the trail, visitors must be sure to leash dogs.



SAN JUAN COUNTY  
**LAND BANK**

360-378-4402  
www.sjclandbank.org  
sjclandbank@sjclandbank.org