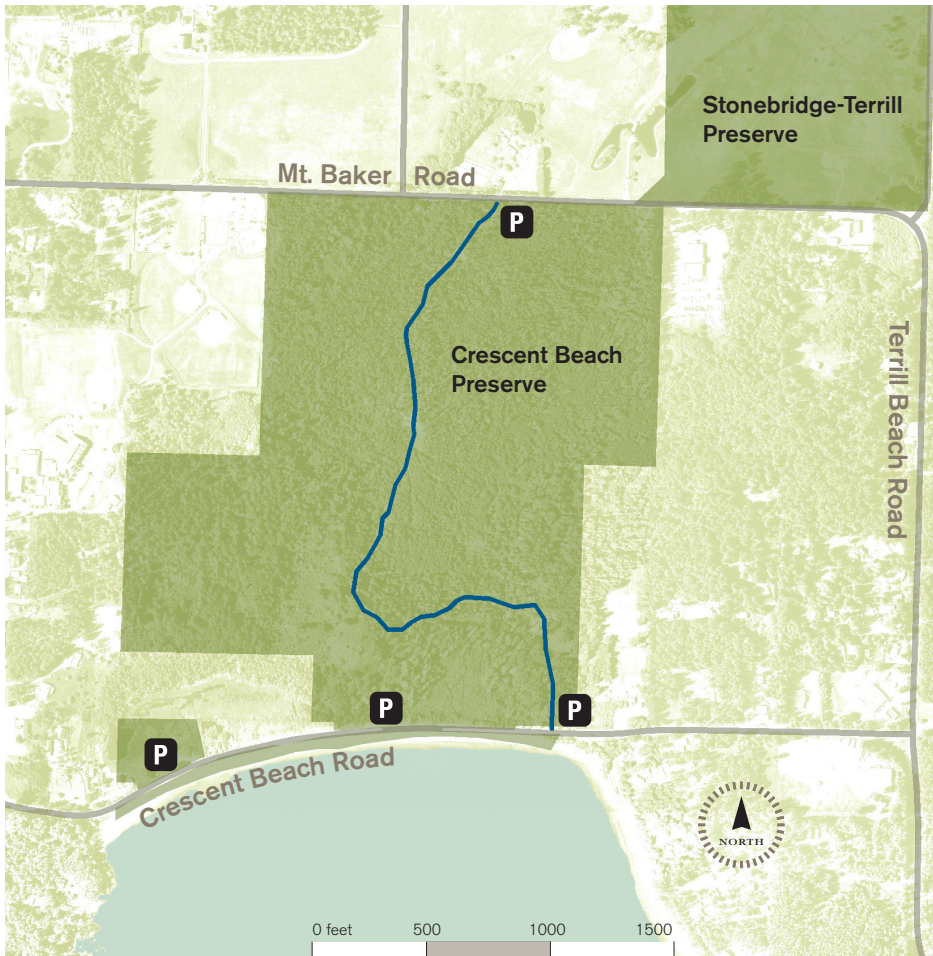


CRESCENT BEACH PRESERVE

Orcas Island



Directions

From the Orcas ferry landing:

Take Orcas Road for 8 miles. Turn right on Main Street and continue straight through Eastsound Village. Main Street becomes Crescent Beach Road just east of town. Parking areas are located on the left (north) side of the road at 8.2, 8.4, and 8.6 miles. To reach the northern parking area, continue on to the T intersection at 8.9 miles. Turn left on Terrill Beach Road. At 9.3 miles, turn left on Mount Baker Road. Parking area is on the left at 9.7 miles from start of trip.

 Land Bank Preserve

 Trails

 Parking

Crescent Beach Preserve protects a rich shoreline and intertidal zone, a network of freshwater wetlands, and Douglas-fir forest. Over 2,000 feet of sand and gravel beach are open to the public. A portion of the tidelands are also leased to a small oyster farm. Wildlife watchers may see osprey, river otter, and a variety of shorebirds and waterfowl. To minimize human impacts to this popular beach, visitors are asked to take extra care to leave marine life and drift logs undisturbed. Please be respectful of adjoining private uplands, beaches, and the oyster farm. Do not trespass.

There are four parking areas, each accommodating 4–5 vehicles, with a 0.7 mile forest trail connecting two of them.

When you visit:

- Stay on designated trails.
- Daytime and pedestrian use only. (Bicycles allowed on the forest trail).
- Leash your dog.
- Take nothing.
- Leave nothing.

