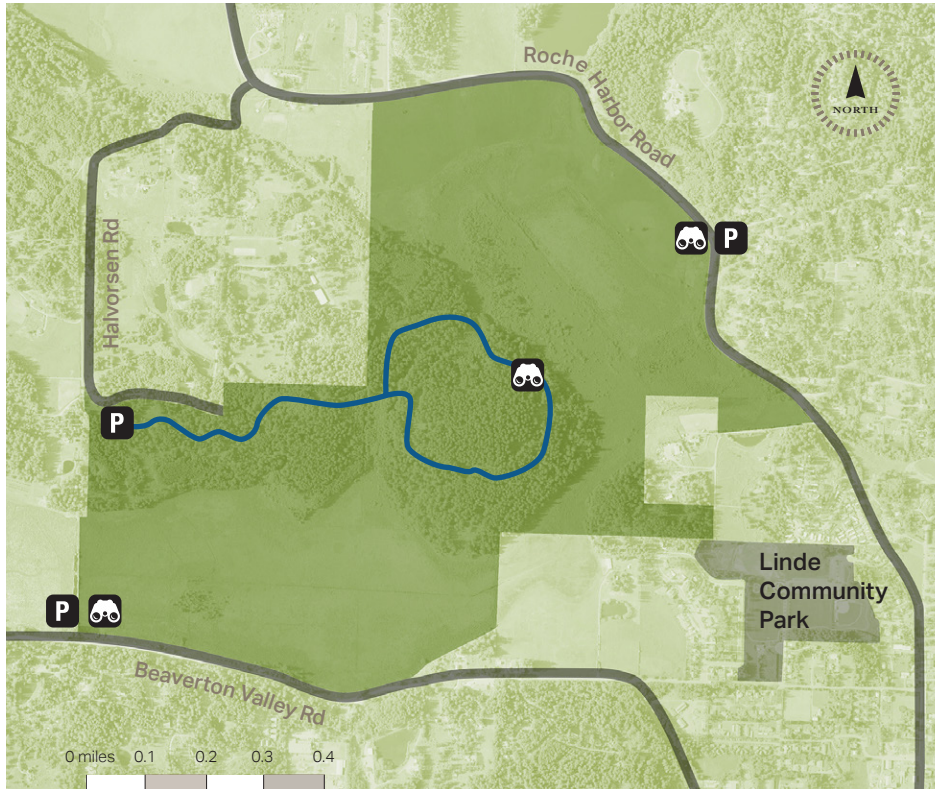


BEAVERTON MARSH PRESERVE

San Juan Island



Located northwest of the town of Friday Harbor, the Land Bank's 473-acre **Beaverton Marsh Preserve** protects a vital and expansive wetland system, rich agricultural lands, scenic views and essential wildlife habitat. The Halvorsen Road trailhead is open for daytime pedestrian, bicycle and equestrian use. On Beaverton Valley Road, an informal pullout provides access to a scenic overlook that provides views over the marsh and excellent bird watching opportunities. Planning and construction for additional trails is currently underway.



Directions

Beaverton Valley Rd Scenic Outlook:


From the Friday Harbor ferry landing:

Turn left onto Spring Street.
At 0.1 miles, turn right onto Second Street.
At 0.3 miles Second Street becomes Guard Street. At 1.1 miles Guard Street becomes Beaverton Valley Road.
At 2 miles arrive at parking area. Parallel parking exists for 1-2 vehicles at roadside pullout. Open year round.

Halvorsen Road Trailhead:

From the Friday Harbor ferry landing:

Turn left onto Spring Street.
At 0.1 miles, turn right onto Second Street.
At 0.4 miles turn right onto Tucker Avenue.
At 1.4 miles road name changes to Roche Harbor Road. At 2.6 miles turn left onto Halvorsen Road. Continue on Halvorsen for 0.8 miles. Turn left onto Taylor's Way.
Trailhead parking exists for 5 cars visible on right.

 Land Bank Preserve

 Trails

 Parking

 Viewpoint

When you visit:

- Stay on designated trails.
- Daytime use only.
- Leash your dog.
- Take nothing.

