

Watmough Preserve Scoping Input for Stewardship and Management Plan

The Watmough Addition, located on the southeastern shore of Lopez Island, has long been considered the last unprotected property on Watmough Bay, and one with immense ecological and cultural significance. In February of 2022, the Conservation Land Bank purchased the 11.6-acre property for \$2.55 million.

After seeking and considering public input in fall of 2023 about ownership and funding options, the Land Bank Commission voted to retain the “Watmough Addition” property and utilize grant funding for a portion of the purchase cost. The Land Bank is in the process of completing the grant agreement.

Preparation of a long-term Stewardship and Management Plan (SMP) is now underway. The Watmough Preserve SMP will encompass the ecological, cultural, recreational, and historic resources on the five parcels in Land Bank ownership, including the Watmough Addition at the head of Watmough Bay.

We’d like to hear from you about what goals and objectives are important and what activities should take place over the next ten years.



Watmough Preserve Scoping Input for Stewardship and Management Plan

The following is a starting point for giving feedback and we welcome further input.

General Management

- **Naming:** The interim name “Watmough Addition” has been used for the Higgins acquisition. Watmough Head is proposed as the new site name. Suitable, alternate names may be proposed here, and a final name will be adopted in accordance with the Land Bank’s Preserve Naming Policy.
- **Long Term Vision:** What do you think successful long term stewardship of the Watmough Preserve looks like in 10 years?

Historic & Cultural

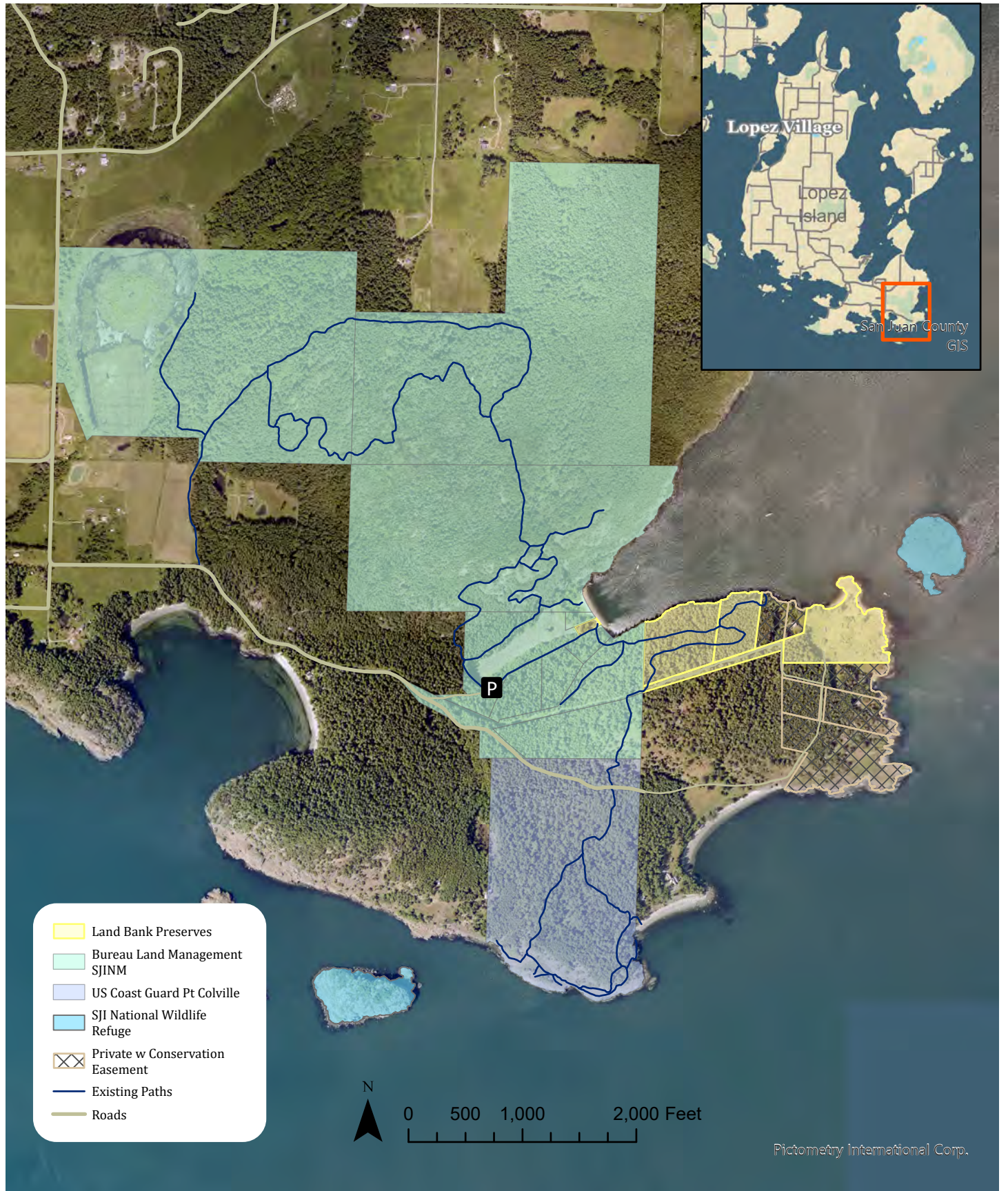
- During the interim period, the Land Bank heard a desire from the community for preservation of the Chadwick house built in 1876. The Land Bank is in discussion with the Lopez Island Historical Museum to support this process and will continue to seek grants and partnerships for stabilization and repairs. What would you like to see for the future educational or interpretative use of the house?
- The Watmough Bay area holds significant cultural importance, and the Preserve Addition/ Watmough Head was occupied as the site of a reef-net fishing camp. Initial outreach notified several area Tribes of the Watmough Addition acquisition, acknowledgement of the importance of this area, and an open invitation to participate in future management. A Cultural Resource Assessment of the property was conducted and consultation will be carried out through Recreation Conservation Office (RCO) as part of the state grant. Tribal engagement is a priority and a work in progress for the Land Bank and San Juan County. San Juan County is currently exploring development of a tribal engagement policy which will help identify and establish best practices for tribal outreach. In the interim, the Land Bank will continue to refine its process and invite tribal participation and consultation in determining management goals, interpretation and opportunities for tribal use.

Ecological

- The Watmough area is designated as a high priority for salmon recovery within San Juan County. The Watmough Addition features 2,053 feet of rocky shoreline and two pocket beaches, remnant patches of coastal bald/prairie, and a mixed conifer forest. An Ecological Assessment of the Addition was completed by Kwiaht in 2022 and of the broader Watmough Bay area by the Land Bank in 2010. Are there habitat management, enhancement or restoration goals you would like to see the Land Bank focus efforts on?
- How should the Land Bank balance resource protection with public access? Actions could include closed habitat reserve areas or limited beach access.
- What would be your favorite place to visit, and how it could be improved or helped?

Public Access

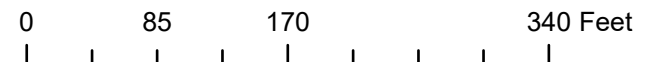
- A new trail connection from the existing Watmough Bay trailhead parking is proposed as the access to the Addition. How would you like to see the Addition/Watmough Head managed for public access? What is the desired level of use?
- Parking congestion is an issue for the Watmough area. How would you like to see the Land Bank work with the Bureau of Land Management to improve parking?
- What types of uses do you think are suitable or unsuitable at the new preserve? Typical Land Bank regulations include no camping, no fires, dogs on leash, no hunting. Other uses to consider include boat landing, special use, driving access, installation of picnic tables or benches, beach access, closed or habitat reserve areas.
- Other public access comments:

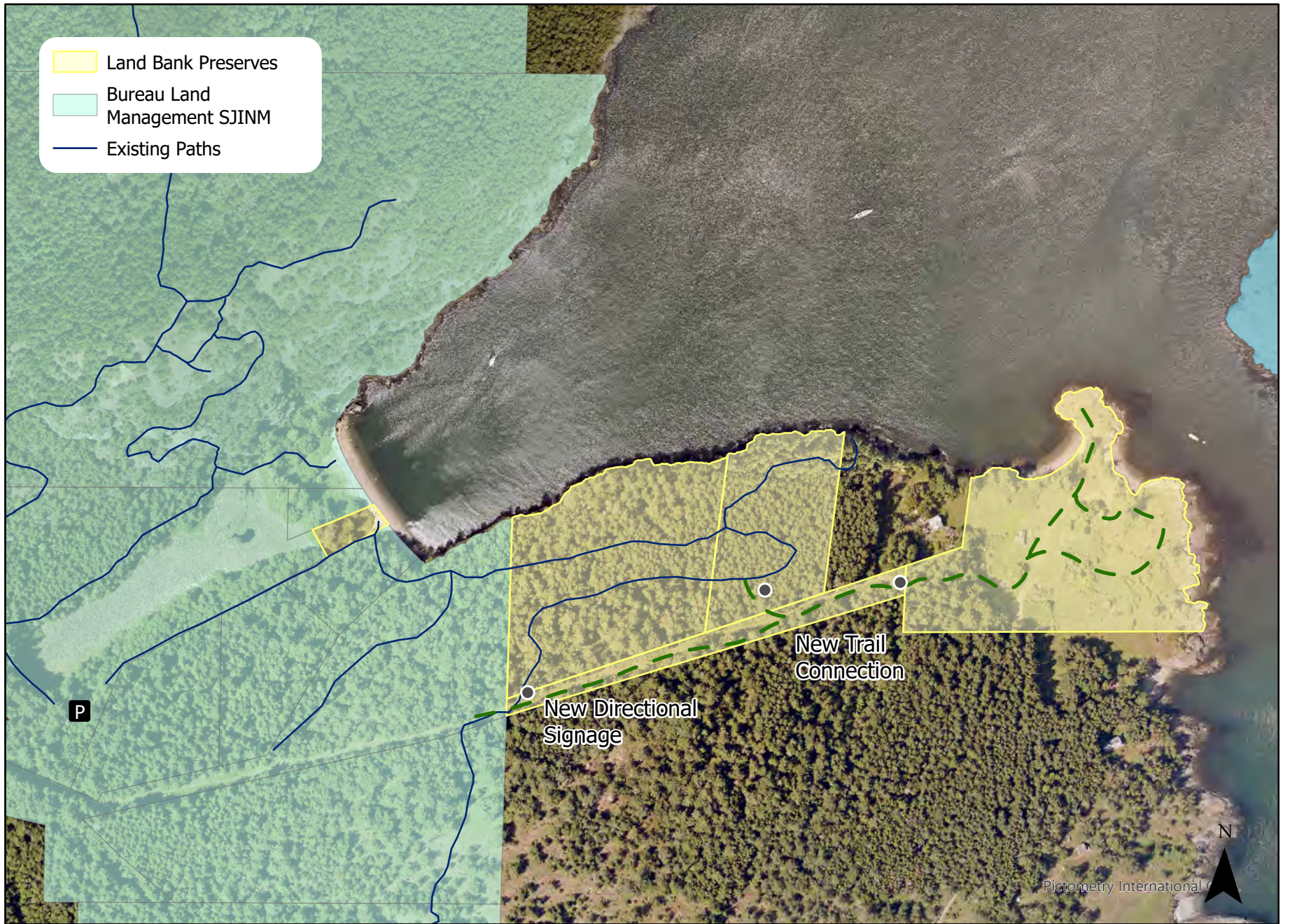


Watmough Bay Area Map

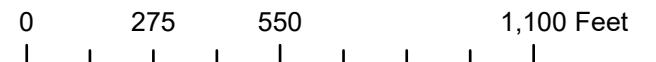


Proposed Site Work





Proposed New Public Access





Proposed New Public Access