

## TRAIL DISTANCE

The wetland crossing in the Beaverton Marsh Preserve adds 300 ft to the trail system of over 3.5 miles

## TRAIL FUNDING

\$5,280,000 - Federal Highway Administration funds for a multimodal trail

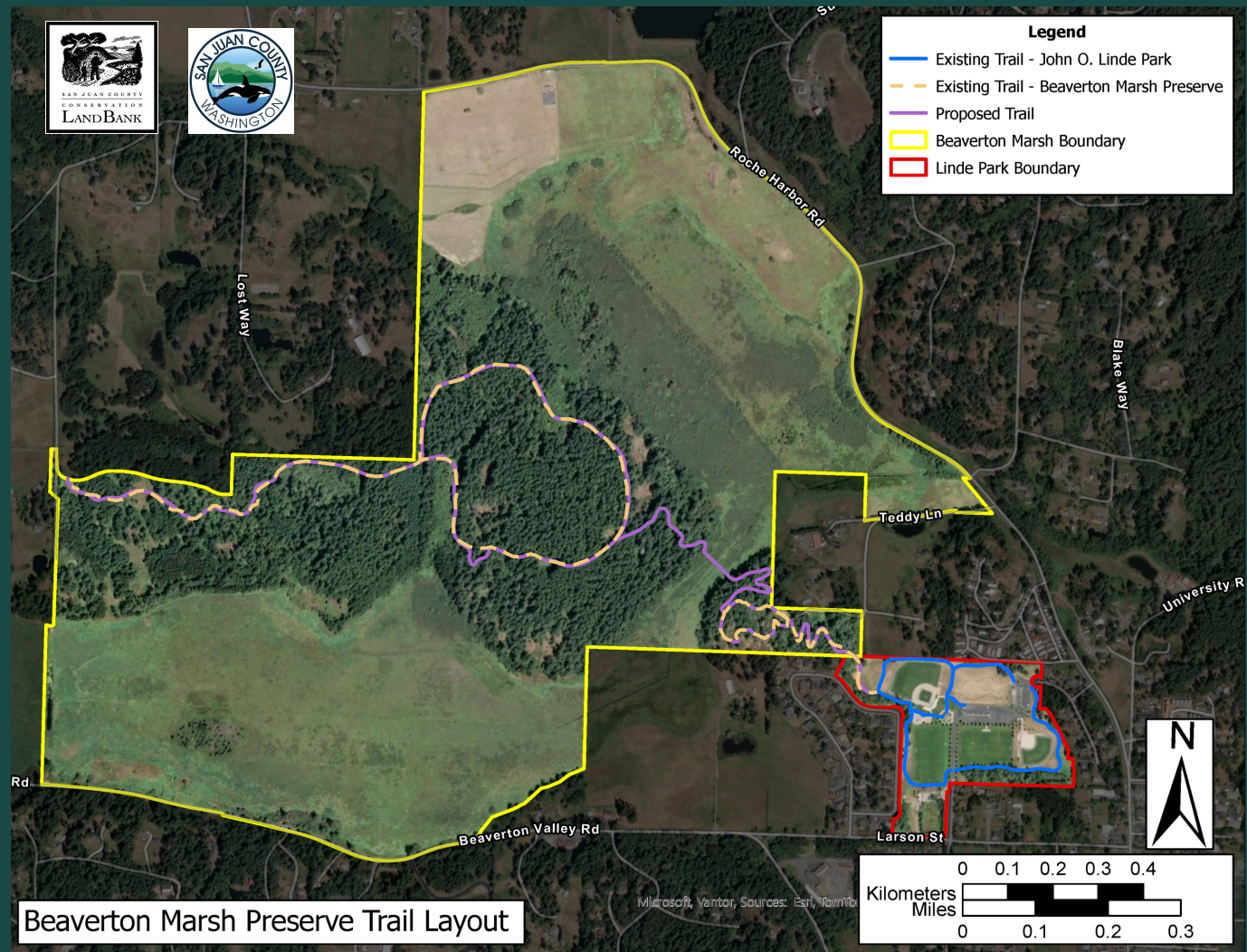
\$824,000 - Maximum 13.5% local match (REET funds)

## PROJECT PARTNERS

Washington State Department of Transportation and Island Recreation

## MANAGEMENT

DRAFT Stewardship & Management Plan for the Preserve out for public comment  
March 4 - March 21



## BEAVERTON MARSH TRAIL - PROJECT TIMELINE

Current - 30% design complete  
Permits in process

August 2026 - 90% design complete  
Next Open House

November 2026 - Project  
out to bid

June 2026 - 60% design complete

September 2026 - 100% design  
Bid package complete  
Construction funds obligated

Winter 2026/2027 - Begin  
construction

July 2026 - Public Walk